



## OWNED STORES

VANS' Director of Global Environments tasked us with bringing their new store concept to life, leveraging China production to control costs.

Through thoughtful value-engineering we were able to meet the construction team's budget while remaining true to the original design vision.



CLIENT-SUPPLIED DESIGNS



VALUE ENGINEERING

**2 WELL CASH WRAP**

CUSTOMER PART NO:	VN-010				
PART NO:	00-001255-01	RIGHT IN LINE			
TITLE:	2 WELL CASH WRAP				the carlson group
REVISION:	2	SCALE:	IMPERIAL: 1/20		
SHEET:	1 of 1	DATE:	1/20/2012		260 East 22nd Street Lombard, Illinois 60148
DESIGNED BY:		DRAWN BY:			
<small>This drawing is part of a design submitted as part of a confidential proposal presentation. This drawing is not to be used for any other purpose or reproduced in any manner without the written approval of TCG. All rights reserved. TCG and its subsidiaries and its employees shall retain the copyright and the property of this drawing. No part of this drawing is to be copied, stored, or transmitted in any form or by any means, electronic, mechanical, or otherwise, without the prior written permission of TCG.</small>					
				2	REVISED FOR OUT-OF-JUNCTION BORDERS, 1 Q&D & 1 DUAL
				1	RELEASED FOR PRODUCTION, REVISED FOR BROWN

ITEM NO.	DESCRIPTION	QTY	UNIT	REMARKS	DATE
1	SHOWERHEAD	1	SHOWERHEAD		
2	SHOWERHEAD	1	SHOWERHEAD		
3	SHOWERHEAD	1	SHOWERHEAD		
4	SHOWERHEAD	1	SHOWERHEAD		
5	SHOWERHEAD	1	SHOWERHEAD		

SECURE TO TOP WITH CONTACT CEMENT AFTER LOWER CABINETS ARE SECURED TOGETHER TO PROVIDE HARDWARE

**FLOATING BACK WRAP**

CUSTOMER PART NO:	VN-128				
PART NO:	00-001493-01	RIGHT IN LINE (R&L)			
TITLE:	FLOATING BACK WRAP				the carlson group
REVISION:	1	SCALE:	IMPERIAL: 1/40		
SHEET:	1 of 1	DATE:	1/20/2012		260 East 22nd Street Lombard, Illinois 60148
DESIGNED BY:		DRAWN BY:			
<small>ALL BONDED MATERIALS MUST BE SUPPLIER TESTED. FAILURE TO PROPERLY TEST AND SUBMIT REPORTS/SAMPLES OF THESE MATERIALS TO TCG-US WILL RESULT IN SUPPLIER ACCEPTING FULL LIABILITY OF FIELD FAILURES AND THE COST OF REPLACEMENT.</small>					

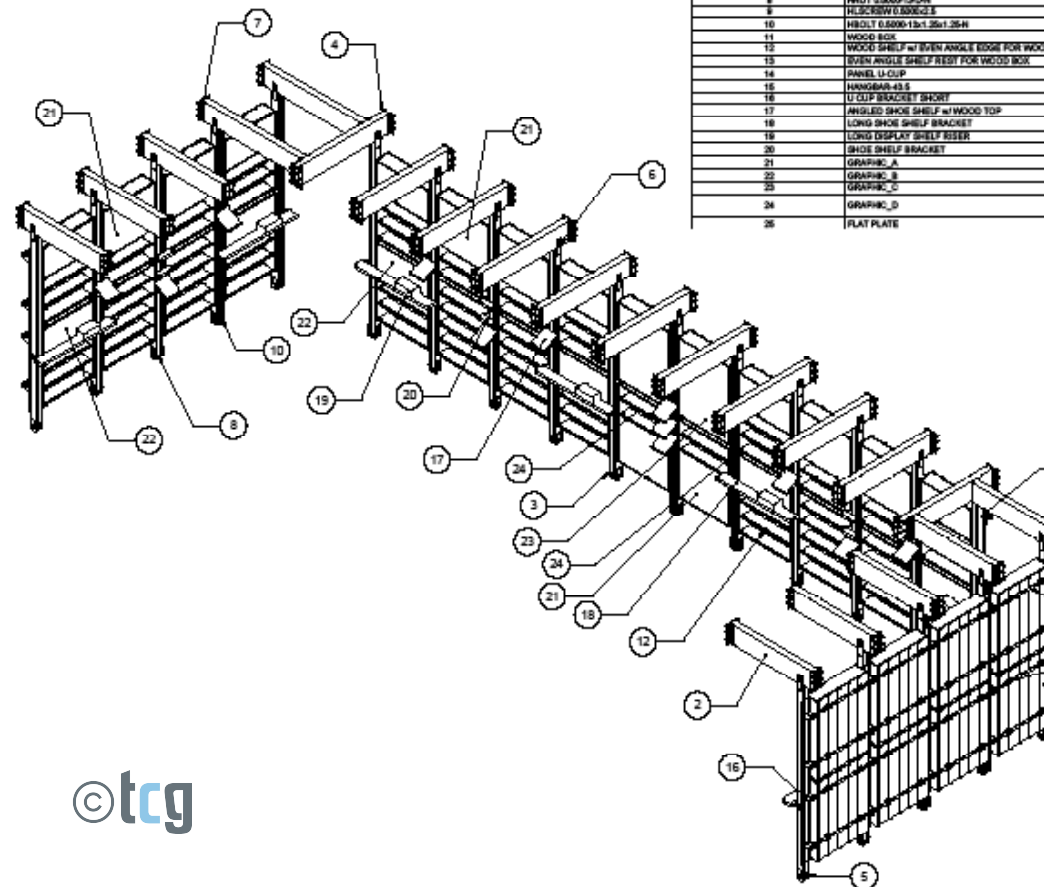
FINAL DESIGN FOR CHINA PRODUCTION



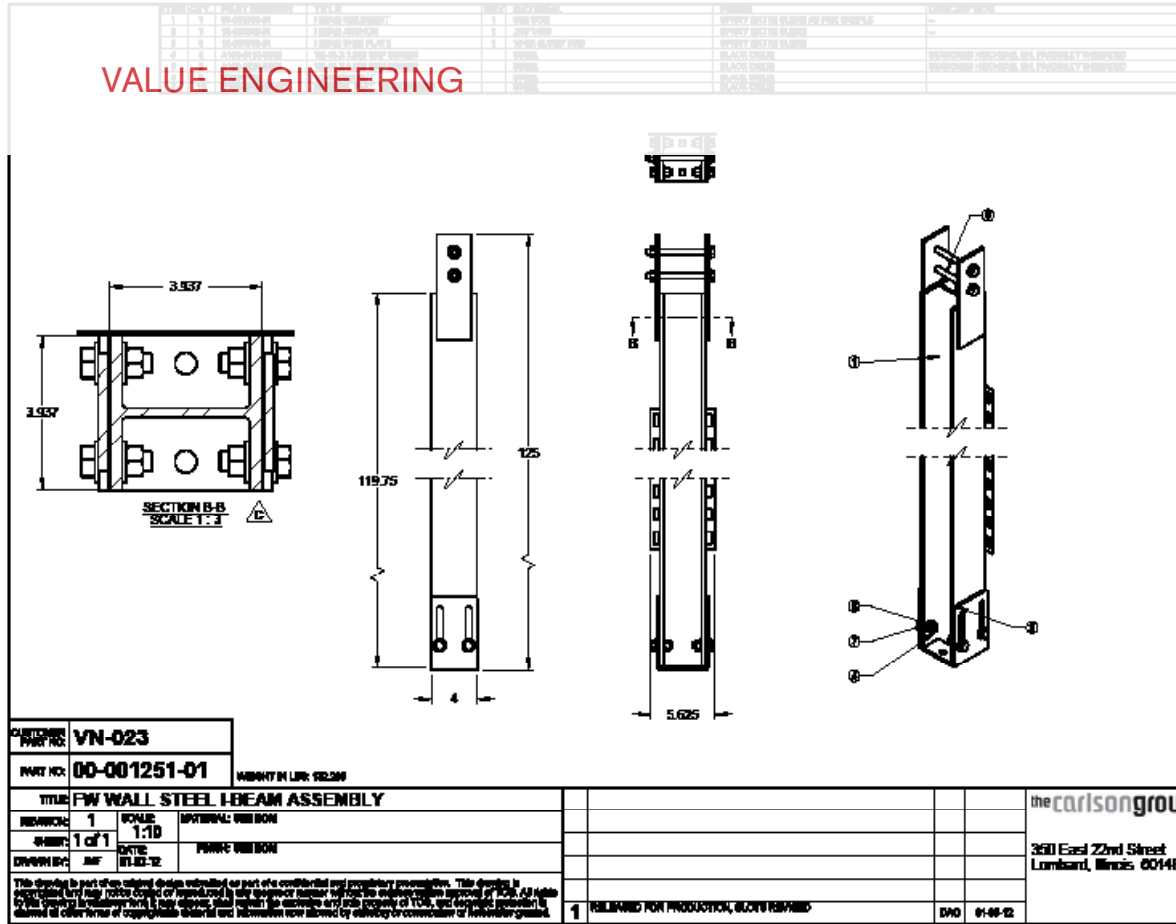
CLIENT-SUPPLIED DESIGNS



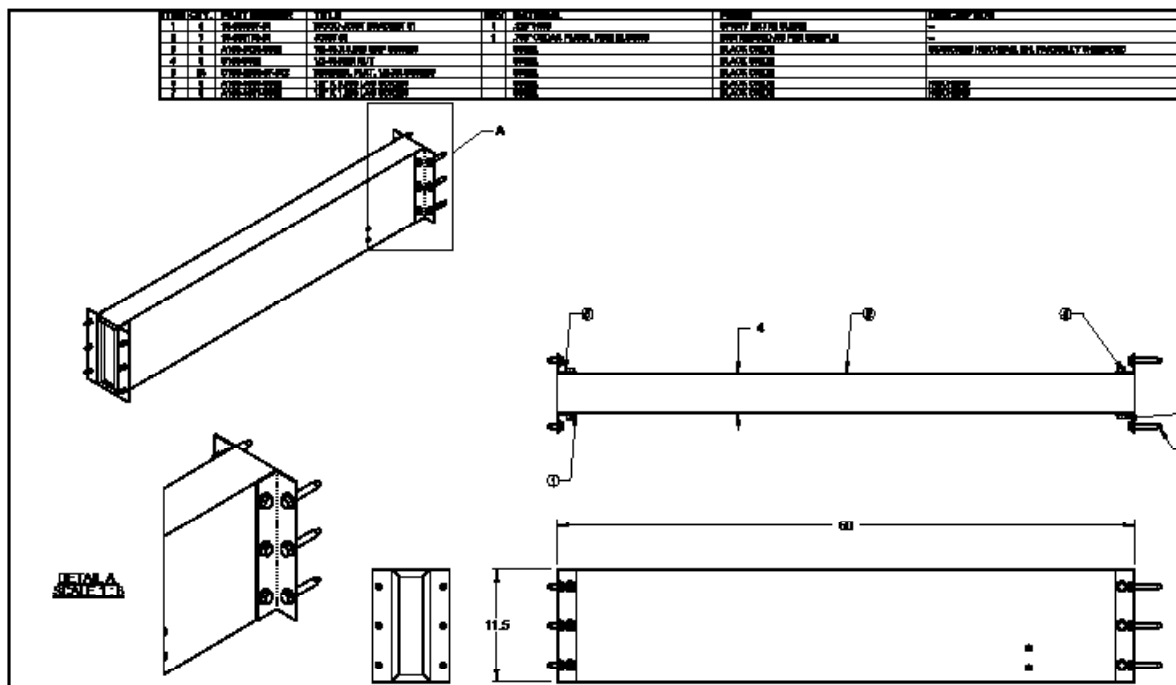
ITEM NO.	PART NUMBER
1	OUTRIGGER 4X4 BEAM
2	4X12 WOOD JOISTS
3	BEAM FLOOR BRACKET
4	BEAM ANGLE FOR WOOD JOIST
5	Preferred Hanger FW-LS
6	NUT 5/8X9-1/2-20
7	NUT 5/8X9-1/2-20
8	FLUSH END 1/2-20X3
9	NUT 5/8X9-1/2-20
10	NUT 5/8X9-1/2-20
11	WOOD BOX
12	WOOD SHELF w/ BEV ANGLE EDGE FOR WOOD
13	BEV ANGLE SHELF REST FOR WOOD BOX
14	PANEL U-CUP
15	HANGER-43.5
16	U-CUP BRACKET BRKT
17	ANGLED SHOE SHELF w/ WOOD TOP
18	LONG SHOE SHELF BRACKET
19	LONG DISPLAY SHELF RISER
20	SHOE SHELF BRACKET
21	GRAPHIC_A
22	GRAPHIC_B
23	GRAPHIC_C
24	GRAPHIC_D
25	FLAT PLATE



VALUE ENGINEERING



FINAL DESIGNS FOR CHINA PRODUCTION

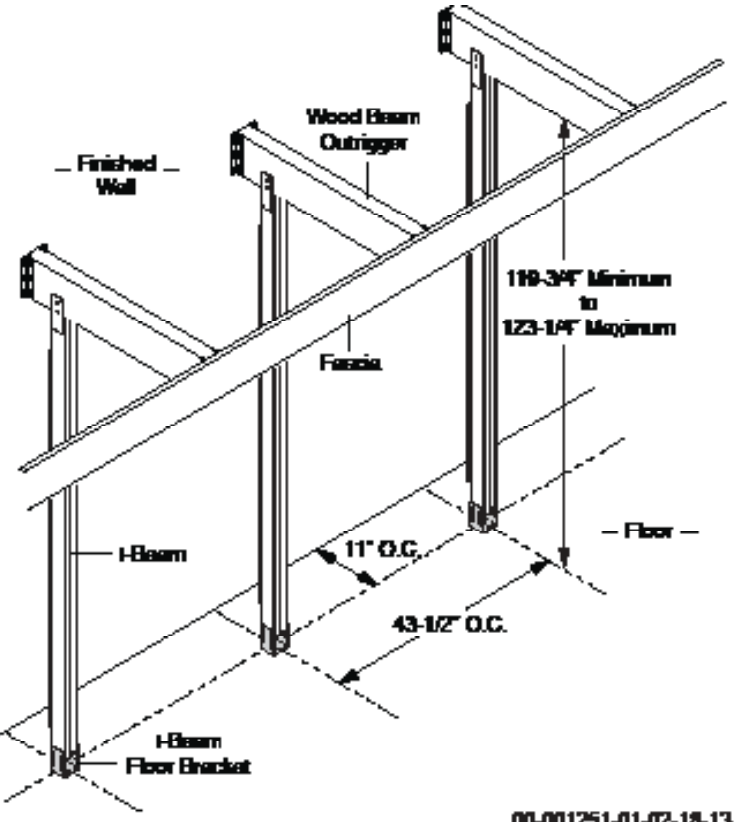


# VANS

OWNED STORES

- 1 INTERPRETATION
- 2 DESIGN DEVELOPMENT
- EXECUTION

1 Layout and mark on the floor the positions for the I-Beam Floor Brackets. The brackets must be 11" (on center) from the Finished Wall and 43-1/2" (on center) from each other as shown. The distance from the floor to the bottom of the Wood Beam Outrigger should be 10' above the finished floor with 118-3/4" minimum to 123-1/4" maximum.



00-001251-01-02-18-13



# VANS

OWNED STORES

INTERPRETATION  
DESIGN DEVELOPMENT  
EXECUTION



# VANS

OWNED STORES

INTERPRETATION  
DESIGN DEVELOPMENT  
EXECUTION

